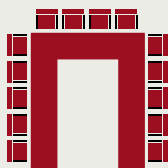


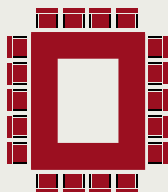
SCHEMA ALLESTIMENTI

MAIN CONFERENCE ROOMS

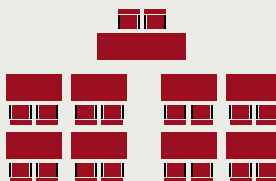
Descrizione sale	Dimensioni in m Altezza soffitto H= 4,20 m	Superficie in mq	Capienza ottimale di partecipanti per tipo di allestimento			
			Ferro di cavallo	Tavolo reale	Classe	Teatro
Amarone	26,4 x 14	370			210	400
Conca d'Oro	19,5 x 14	273			150	280
Ca' Florian	15 x 14	210	60	65	120	200
Crearo	11 x 14	154	50	55	70	130
Ripasso	15 x 7	105	40	45	60	90
Valpolicella	15 x 7	105	40	45	60	90
Sestante	10 x 7	70	32	35	45	50
Rafaél	10 x 7	70	32	35	45	50
Altre soluzioni modulari						
Ripasso 2 · Valpolicella 2	9 x 7	63	24	30	25	45
Ripasso 1 · Valpolicella 1	6,5 x 7	46	16	20	14	25
Sestante 1 · Rafaél 1	6,5 x 7	46	16	20	14	25
Sestante 2 · Rafaél 2	4,5 x 7	32	10	12		15
Pedana: Moduli da 200 x 140 x H31 cm						



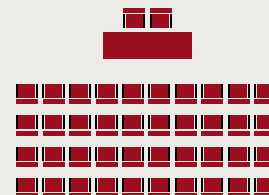
*Ferro di Cavallo
U-shape*



*Tavolo reale
Boardroom*



*Classe
Classroom*



*Teatro
Theatre*